



DESCRIPTION

BACHSMOKE DA is an Automatic Smoke Curtain that in the case of fire, limits and controls the movement of smoke, with classification D180.

The curtain is composed by: fiberglass fabric with polyurethane coating on both sides seamed with high resistant kevlar wire and fixed to a steel roller of 78mm of diameter; galvanized steel head-box and Aluminum profile bottom bar.

All the system is driven by a 24Vdc tubular motor and controlled by an electronic board, BACH's CRM (Control and Regulation for Motor) with special gravity fail safe system.

The control panel for automatic curtains (CBM), with nominal input voltage of 115Vac or 220Vac and output voltage of 24Vdc. Uninterruptible Power Supply (UPS System) with autonomy up to 6 hours exists in all control panels.

Tested and approved according to the European Standard UNE EN 12101-1 and with CE Marking.



bach smoke DA

OPERATION

The system can be activated by a SHEV, fire alarm contact, internal fire and smoke detection devices, or manual emergency buttons. In the event of a fire, the BACH's Control Panel (CBM), receives the signal alarm, and the automatic curtain deploys automatically, with controlled and safe constant speed of descent even following total power loss on all curtains. If there is a false alarm the curtains return to stand-by position automatically after reset of alarm from main Fire Management Systems. In case of main power loss, the curtain will remain fully retracted up to 6 hours thanks to BACH's battery back-up system.

FABRIC

The fiberglass fabric resists up to 600°C. The polyurethane coating on both sides guarantees mechanical stability when handling the fabric not only in the sewing process but also during the installation. All seams are done with high resistance Kevlar wire.

HEADBOX DESCRIPTION

Galvanized Steel head-box 1,2mm thickness with different possibilities to adapt to different architectural spaces, and maintenance requirements.

DIMENSIONS

Dimensions of the head-box varies depending on width and height of the curtain.

ROLLER

Galvanized Steel of 1,5mm thickness and 78mm diameter. Special slide system for fixing the fabric.

BOTTOM BAR

Aluminum profile RAL 9003 white painted of 1,8mm thickness.

ELECTRIC MOTOR DESCRIPTION

BACH tubular motor 24Vdccc

MAXIMUM POWER

24 W/ 18,5Nm

MAXIMUM CURRENT

3 A

AVERAGE LINEAR SPEED

0.10 m/s to 0.15 m/s

CRM MOTOR REGULATION BOX DESCRIPTION

Polyester box IP56 with an electronic board inside to control the movement of the motor.

DIMENSIONS (W x H x D)

120mm x 160mm x 75mm

CBM CONTROL PANEL DESCRIPTION

Receives the signal alarm from Fire Management System and controls the movement of curtains. Visual and acoustic alert system.

DIMENSIONS (W x H x D)

From 300 x 230 x 140 mm to 400 x 400 x 210 mm

INPUT

115 or 220 Vac 50Hz

OUTPUT

24Vcc

BATTERY

2 x 12Vcc 7,5 Ah rechargeable (up to 6 hours autonomy)
2 x 12Vcc 1.3 Ah rechargeable (up to 1 hour autonomy)

MAXIMUM CAPACITY

Up to 12 motors.

OPTIONAL EXTRAS RAL COATING

Head-box, side guides, bottom bar and false ceiling extra accessories.

STAINLESS STEEL ELEMENTS

Head-box, screws, rivets.

HEAD-BOX

Customized set-up for specific architectural or special operational requirements.

FALSE CEILING ACCESS.

Aluminum profile painted RAL 9003 to hide head-box over false ceiling..

CBM CONTROL PANEL

Special designs up to 48 motors in one control panel, additional information output, micro switches, communication with other devices, special battery backup, possibility of delaying curtain deployment.

ESCAPE BUTTON

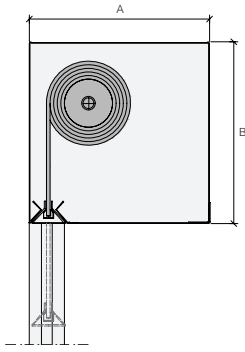
Pushing this button the curtain goes up and the user can escape through the opening, the curtain deploys 30s later automatically.

EMERGENCY BUTTON

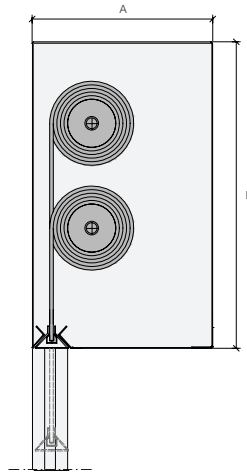
Pushing this button the curtain deploys immediately.



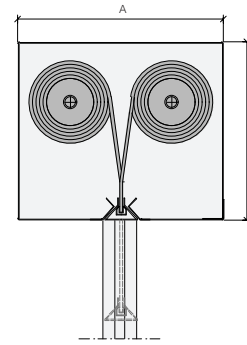
HEADBOX



SINGLE ROLLER
A: 180-260mm
B: 180-260mm

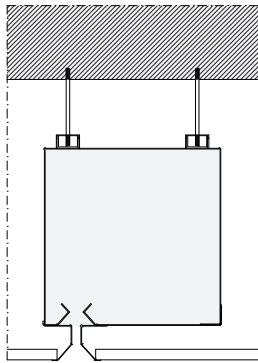


MULTI ROLLER VERTICAL
A: 190-270mm
B: 300-500mm

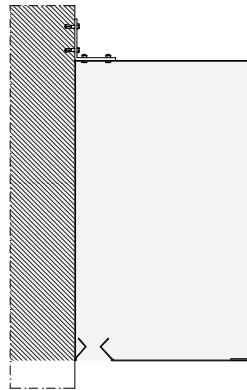


MULTI ROLLER HORIZONTAL
A: 250-400mm
B: 170-260mm

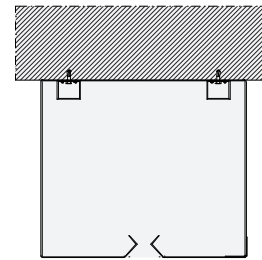
HEADBOX FIXING



HANGING/FALSE CEILING

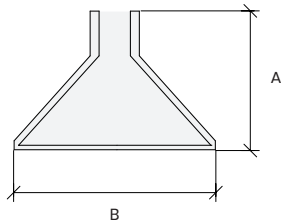


WALL

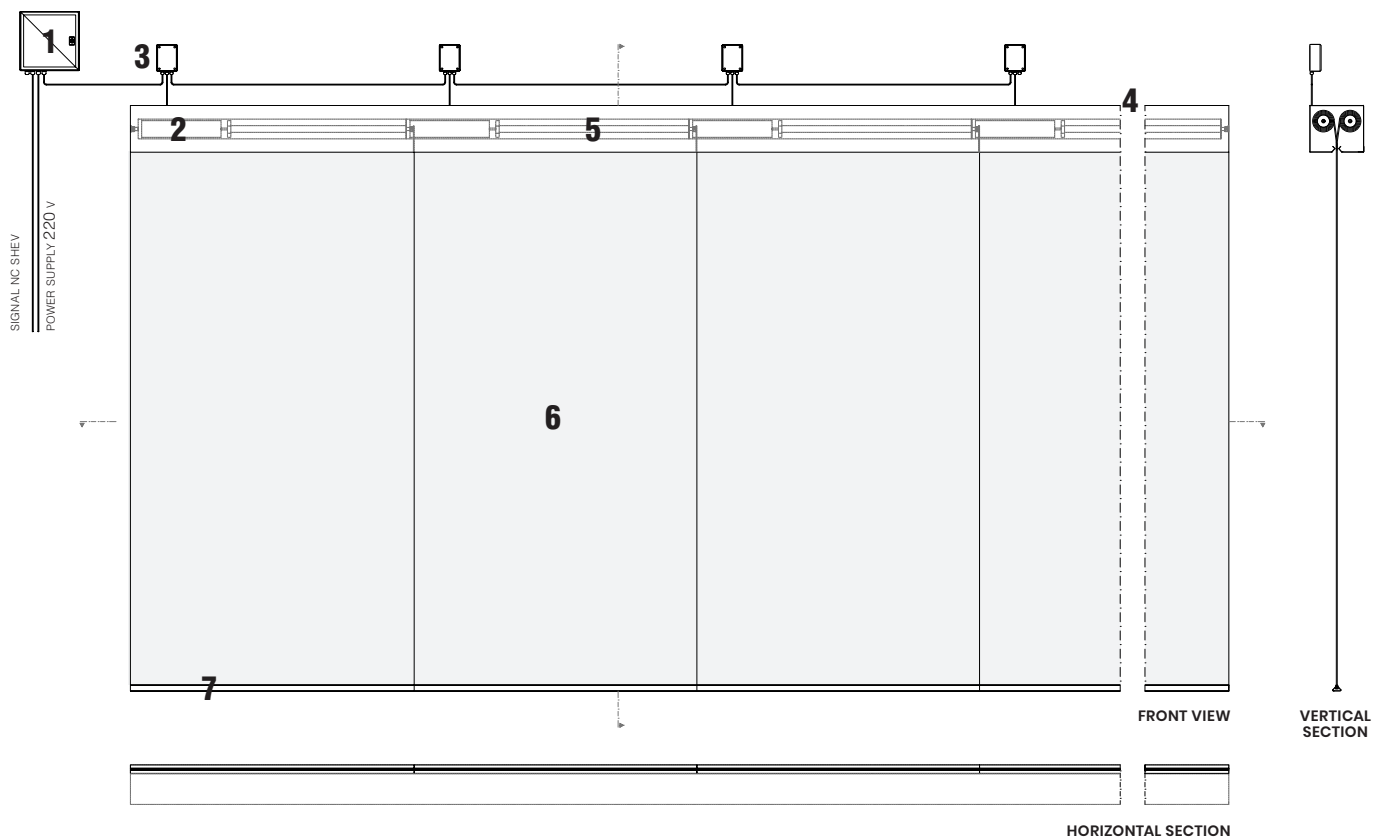


TOP CEILING

BOTTOM BAR



ALUMINUM
A: 33mm
B: 48mm



1. control panel CBM
2. BACH tubular motor 24vdc
3. CRM electronic control board
4. galvanized steel head-box
5. galvanized steel roller
6. smoke resistant fabric
7. aluminum bottom bar