

MODEL BACHFIRE UL



description

BACHFIRE UL is an Automatic Fire Curtain that in the case of fire, limits and controls the fire, with classification UL 10D 180 minutes.

The curtain is composed by: fiberglass fabric with polyurethane coating on both sides seamed with reinforced steel wire and fixed to a steel roller of 78mm of diameter; galvanized steel elements as headbox, side guides and bottom bar.

All the system is driven by a 24Vdc tubular motor and controlled by an electronic board, BACH's CRM (Control and Regulation for Motor) with special gravity fail safe system.

The control panel for automatic curtains (CBM), with nominal input voltage of 115Vac or 220Vac and output voltage of 24Vdc.

Uninterruptible Power Supply (UPS System) with autonomy up to 6 hours exists in all control panels.

Tested and approved according to the European Standards UNE EN 1634-1 and UNE EN 1363-1 and UL - USA standards for fire protection.



operation
description

The system can be activated by a SHEV, fire alarm contact, internal fire and smoke detection devices, or manual emergency buttons. In the event of a fire, the BACH's Control Panel (CBM), receives the signal alarm, and the automatic curtain deploys automatically, with controlled and safe constant speed of descent even following total power loss on all curtains. If there is a false alarm the curtains return to stand-by position automatically after reset of alarm from main Fire Management Systems. In case of main power loss, the curtain will remain fully retracted up to 6 hours thanks to BACH's battery back-up system.

fabric
description

The fiberglass fabric resists up to 1100°C. The polyurethane coating on both sides guarantees mechanical stability when handling the fabric not only in the sewing process but also during the installation. All seams are done with reinforced stainless steel wires with a coating of Kevlar.

headbox
description

Galvanized Steel head-box 1,2mm thickness with different possibilities to adapt to different architectural spaces, and maintenance requirements.

dimensions

Dimensions of the head-box varies depending on width and height of the curtain.

side guides
description

Galvanized Steel from 1,5 to 3mm thickness and different dimensions depending on width and height of the curtain.

roller
description

Galvanized Steel of 1,5mm thickness and 78mm diameter. Special slide system for fixing the fabric.

bottom bar
description

Galvanized Steel of 1,5mm thickness. Two-parts system easy to mount.

electric motor

description BACH tubular motor 24Vdcc

maximum power 24 W/18,5Nm

maximum current 3 A

average linear speed 0.11 m/s

CRM motor regulation box

description Polyester box IP56 with an electronic board inside to control the movement of the motor.

dimensions (W x H x D) 120mm x 160mm x 75mm

CBM control panel

description Receives the signal alarm from Fire Management System and controls the movement of curtains. Visual and acoustic alert system.

dimensions (W x H x D) From 300 x 230 x 140mm to 400 x 400 x 210mm

input 115 or 220 Vac 50Hz

output 24Vcc

battery 2 x 12Vcc 7,5 Ah rechargeable (up to 6 hours autonomy)

maximum capacity Up to 12 motors.

optional extras

RAL coating

stainless steel elements Head-box, side guides, bottom bar and false ceiling extra accessories.

head-box Head-box, Side guides, bottom bar, screws, rivets.

side guides Customized set-up for specific architectural or special operational requirements.

bottom bar Aluminum profile painted RAL 9003 (white) for using with false ceiling accessories.

false ceiling accessories Aluminum profiles painted RAL9003 to hide head-box over false ceiling.

electric motor

Special 24Vdc motors up to 80Nm without CRM; Special 230Vac motors up to 120Nm without CRM.

CRM

Customized board for high speed deployment.

CBM control panel

Special designs up to 48 motors in one control panel, additional information output, micro switches, communication with other devices, special battery backup, possibility of delaying curtain deployment.

escape button

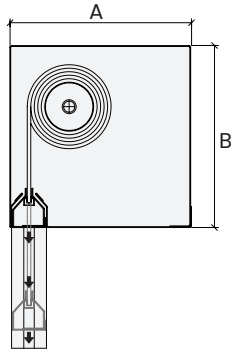
Pushing this button the curtain goes up and the user can escape through the opening, the curtain deploys 30s later automatically.

emergency button

Pushing this button the curtain deploys immediately.

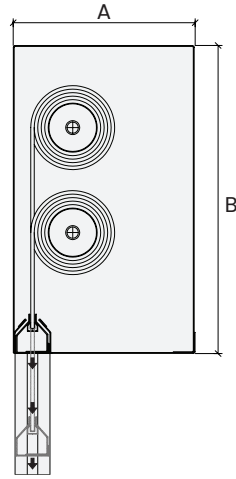


headbox



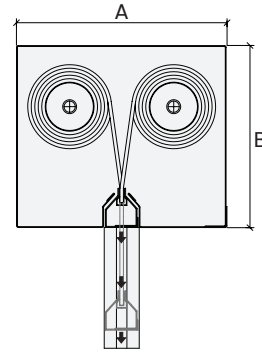
SINGLE ROLLER

A: 180-260mm
B: 180-260mm



MULTI ROLLER VERTICAL

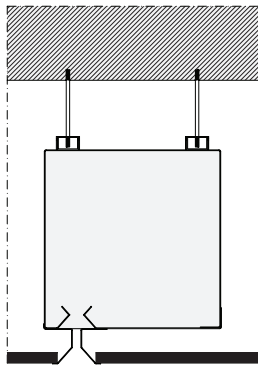
A: 190-270mm
B: 300-500mm



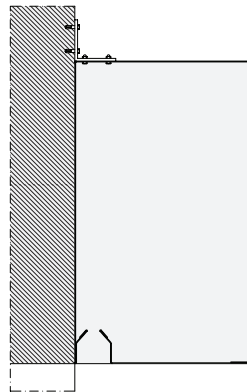
MULTI ROLLER HORIZONTAL

A: 250-400mm
B: 170-260mm

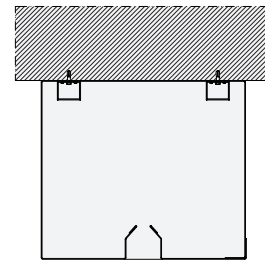
headbox fixing



HANGING/FALSE CEILING

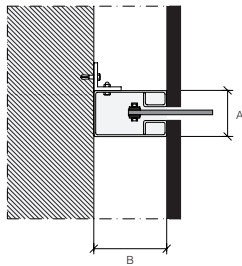


WALL



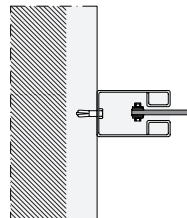
TOP CEILING

side guides fixing

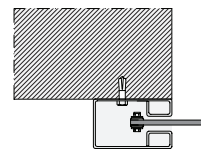


HIDDEN

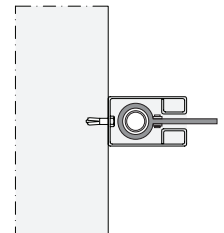
A: 50-76mm
B: 80-120mm



SIDE WALL

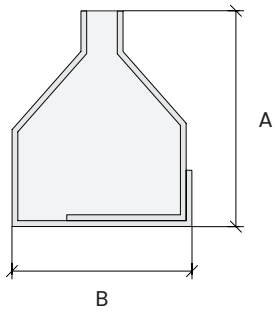


SCREW SIDE GUIDES



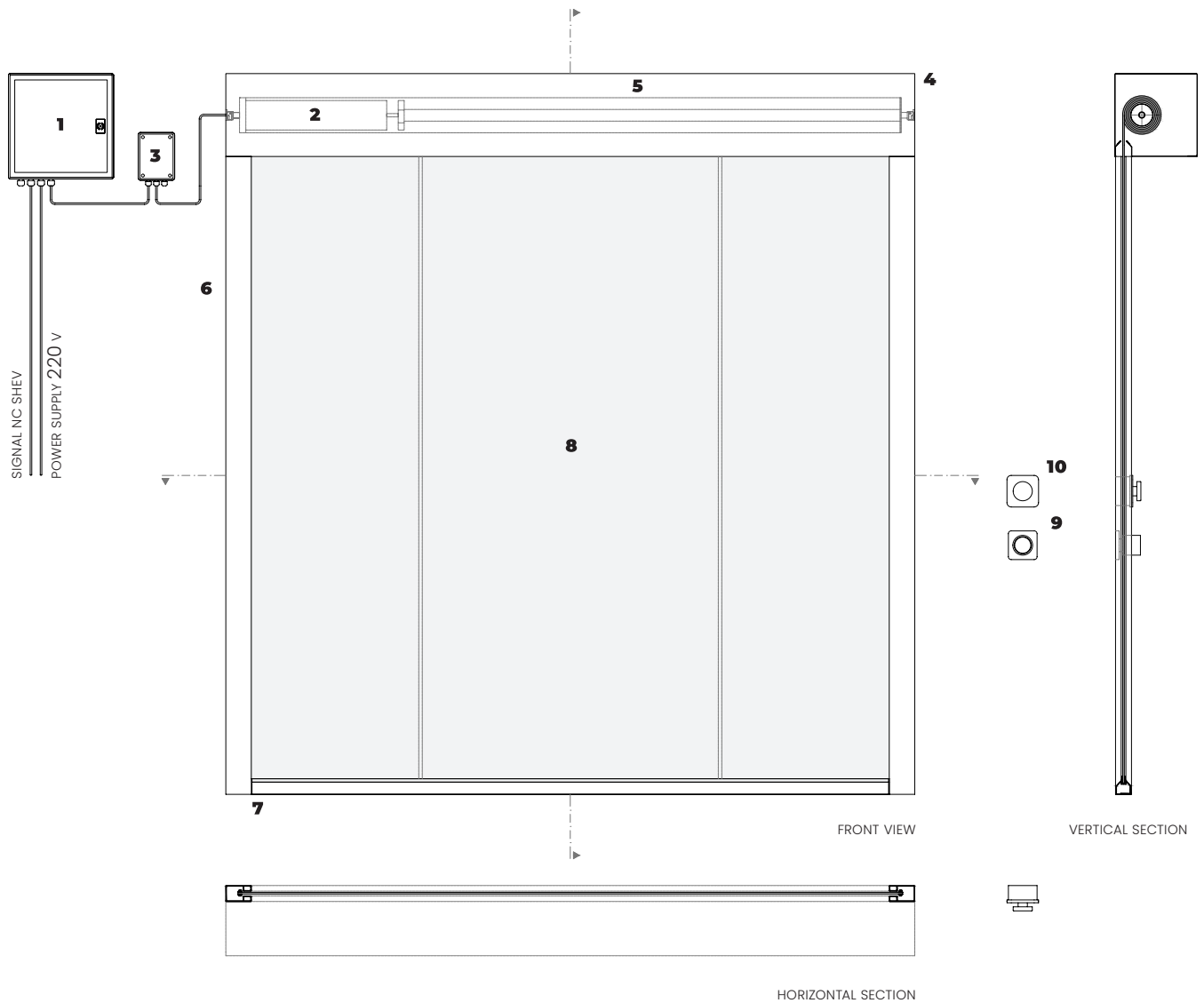
TUBE SIDE GUIDES

bottom bar



GALVANIZED STEEL

A: 55mm
B: 47mm



1. control panel CBM
2. BACH tubular motor 24vdc
3. CRM electronic control board
4. galvanized steel head-box
5. galvanized steel roller
6. galvanized steel side guides
7. galvanized steel bottom bar
8. fire resistant fabric
9. escape button
10. emergency button