



BACH

DH
30



BACHSMOKE FIX GLASS

smoke curtain system



Product features

BACH SMOKE FIX GLASS is a Static glass Smoke Curtain that in case of fire limits and controls the movement of smoke with classification of DH30. The smoke curtain delimits the space of the building according to the areas that have been specified to prevent the smoke spreading into other areas. **BACH SMOKE FIX GLASS** is a system appropriated to public areas where the esthetic criteria is demanded. Tested and approved according to the European Standard UNE EN 12101-1 and with CE Marking.



- ① Glass curtain 6 mm
- ② Stainless Steel fixings or galvanized steel

Definition/Classification



.Integrity Curtain material achieves a resistance to smoke at 600°C for a minimum of 120 minutes

Test and standarts

.Technical assessment of suitability
.Registration in CTE recognized certificationtest and resistance classification E120 according to norms:
.Tested and approved according to the European Standard **UNE EN 12101-1** and with CE Marking.

Applications

Usually installed in logistics centers, industries, nuclear power plants, agri-food industries, shops, theaters, sports centers,....



BACH

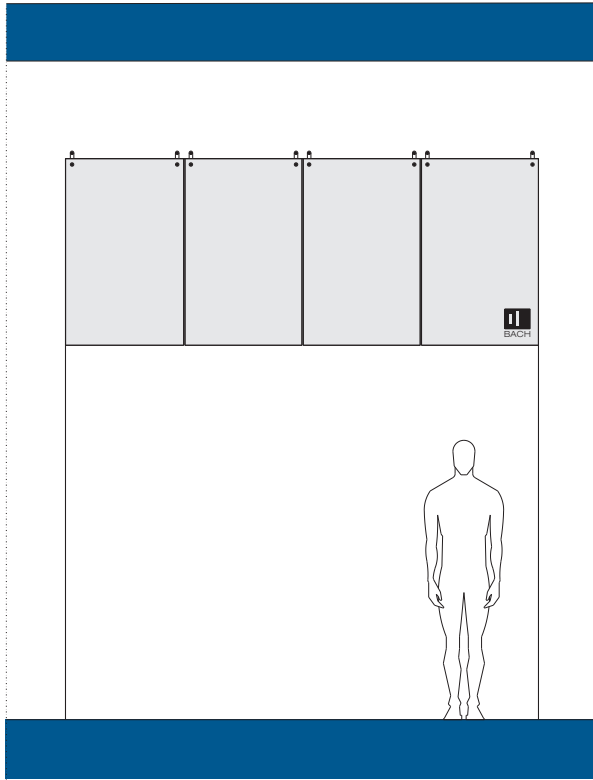
DH 30



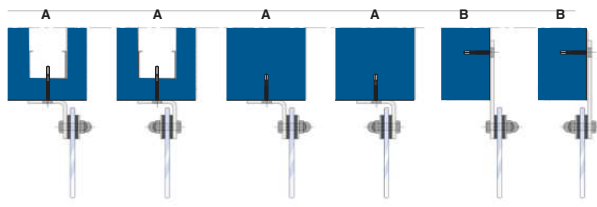
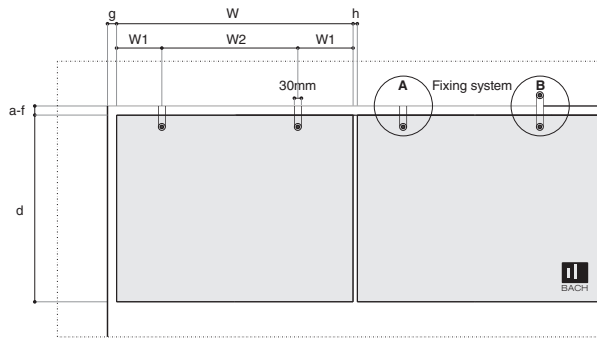
BACHSMOKE FIX GLASS

smoke curtain system

Technical details



System front view



Fixing system



Fixing system standart



Fixing system design

Glass Characteristics

Thickness: 6mm
Width and Height tolerance: +- 2mm
Impact Resistance (EN 12600): 1(C)1 Classification
Specific Weight: 15 kg/m²
Light Transmission: 89 %

Optional Extras

Special shape cutting
Stainless Steel fixings

W	1500 mm
D	1100 mm
W1	100 mm 375 mm
W2	750 mm
a-f	10 mm
g2	0 mm
h	5 mm



ISO 9001:2008
9192.BRRR



Head Office

Pol. Ind. Pinares Llanos
C/ Camino de Pinares Llanos N^o5
28670 Villaviciosa de Odón, Madrid

Contacts

Phone: (+34) 916 162 695
Fax: (+34) 916 164 422

Web: www.bach-sl.com
Email: info@bach-sl.com